



# SAXWERK

## PLANT REPORT SAX 637

### Water Treatment Plant, Roslagsvatten, Åkersberga Sweden

Dry Sludge Silos 110m<sup>3</sup> with  
discharge equipment.



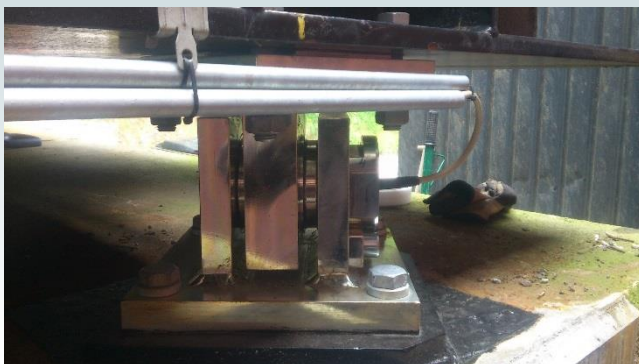
### Sludge Silos 110 m<sup>3</sup>

Saxwerk delivered in 2015 one new dry sludge silo for the water treatment plant, Roslagsvatten in Åkersberga, Sweden.

Saxwerk has delivered, installed and commissioning one sludge silo consisting of a distribution screw, steel silo, sliding frame, discharge screw and a complete control system with outloading panel. The system unload sludge to a lorry outside the silos.

#### Technical data:

<b>Material:</b>		Dry sludge
<b>Capacity:</b>	80	m <sup>3</sup> /h
<b>Diameter:</b>	4 000	mm
<b>Casing Height:</b>	8 800	mm
<b>Support Height:</b>	5 000	mm
<b>Volume:</b>	110	m <sup>3</sup>



## SAXWERK